

## CONTOUR

## SENATOR

Contour is a lightweight, flexible work and meeting chair designed in accordance with circular design principles.

The backrest is made using 100% recycled Polypropylene and both backrest and seat come with removable covers that can be chosen to be upholstered using 100% recyclable material, further ensuring reparability and longevity.

### OVERVIEW



CTR101



CTR101A



CTR102



CTR102A



CTR103



CTR104A



CTR105



CTR105A



### PearsonLloyd

PearsonLloyd is a product, furniture and innovation design studio led by founders Luke Pearson and Tom Lloyd, and run from a studio in Shoreditch, East London. For the last twenty years, the agency has designed products, systems and environments for the home, workplace, transport and healthcare sectors. In 2008, Luke and Tom were awarded the distinction of Royal Designers for Industry by The Royal Society of Arts in 2012 were named in the top 50 designers 'Shaping the Future' by Fast-Co Magazine in New York.

## CERTIFICATION

---

### Standard Features

(\*Selected Models Only)

- Plastic Shell\*
- Upholstered seat pad
- Plastic arm pads\*
- Plastic loop arms\*
- Tubular Steel frame\*
- Tubular Steel frame with swivel writing table and wire basket\*
- Plastic under seat shroud in Black\*
- Height adjustment tilt mechanism with gas cylinder\*
- 5 Star Plastic base\*
- Hard wheel casters\*

### Optional Features

(\*Selected Models Only)

- Plastic glides with felt\*
- Counter height stool\*

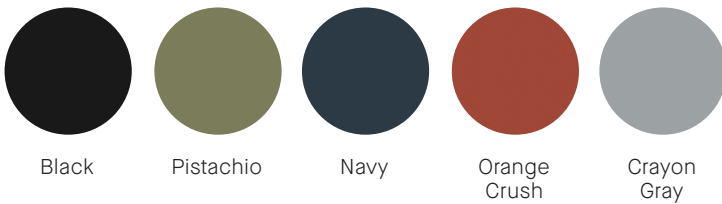
## FINISHES

---

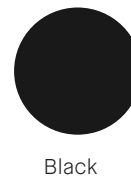
### Options

- Plastic shell available in Black, Pistachio, Navy, Orange Cursh or Crayon Gray
- Tubular steel frame available in complementary Black, Pistachio, Navy, Orange Cursh or Crayon Gray powder coat
- Plastic five star base and mechanism available in Black

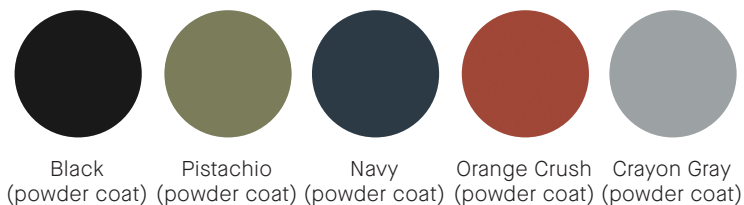
### Plastic Shell Color



### Arm Finishes



### Frame Finish



## DIMENSIONS

---

### CTR101

Overall Height: 34"  
Overall Width: 20.75"  
Overall Depth: 22"  
Seat Height: 18.25"  
Seat Width: 19.25"  
Seat Depth: 19"



### CTR101A

Overall Height: 34"  
Overall Width: 24.75"  
Overall Depth: 22"  
Seat Height: 18.25"  
Seat Width: 19.25"  
Seat Depth: 19"  
Arm Height: 26.25"



### CTR102

Overall Height: 34"  
Overall Width: 20.75"  
Overall Depth: 22"  
Seat Height: 18.25"  
Seat Width: 19.25"  
Seat Depth: 19"



### CTR102A

Overall Height: 34"  
Overall Width: 24.75"  
Overall Depth: 22"  
Seat Height: 18.25"  
Seat Width: 19.25"  
Seat Depth: 19"  
Arm Height: 26.25"



### CTR103

Overall Height: 46.5"  
Overall Width: 22.25"  
Overall Depth: 23.25"  
Seat Height: 31"  
Seat Width: 19.25"  
Seat Depth: 19"



### CTR104A

Overall Height: 34"  
Overall Width: 26.5"  
Overall Depth: 27.25"  
Seat Height: 18.25"  
Seat Width: 19.25"  
Seat Depth: 19"  
Arm Height: 26.25"  
Writing Tablet Width: 19.75"  
Writing Tablet Depth: 11.75"



### CTR105

Overall Height: 32.7-37.7"  
Overall Width: 29.5"  
Overall Depth: 29.5"  
Seat Height: 16.25-21.25"  
Seat Width: 19.25"  
Seat Depth: 19"



### CTR105A

Overall Height: 32.7-37.7"  
Overall Width: 29.5"  
Overall Depth: 29.5"  
Seat Height: 16.25-21.25"  
Seat Width: 19.25"  
Seat Depth: 19"  
Arm Height: 26.25"



## CONTOUR

## SENATOR

Contour is a lightweight, flexible work and meeting chair designed in accordance with circular design principles.

The backrest is made using 100% recycled Polypropylene and both backrest and seat come with removable covers that can be chosen to be upholstered using 100% recyclable material, further ensuring reparability and longevity.

### OVERVIEW



CTR201



CTR201A



CTR202



CTR202A



CTR203



CTR204A



CTR205



CTR205A



### PearsonLloyd

PearsonLloyd is a product, furniture and innovation design studio led by founders Luke Pearson and Tom Lloyd, and run from a studio in Shoreditch, East London. For the last twenty years, the agency has designed products, systems and environments for the home, workplace, transport and healthcare sectors. In 2008, Luke and Tom were awarded the distinction of Royal Designers for Industry by The Royal Society of Arts in 2012 were named in the top 50 designers 'Shaping the Future' by Fast-Co Magazine in New York.

## CERTIFICATION

---

### Standard Features

(\*Selected Models Only)

- Upholstered seat pad
- Upholstered shell
- Plastic arm pads\*
- Plastic loop arms\*
- Tubular Steel frame\*
- Tubular Steel frame with swivel writing table and wire basket\*
- Plastic under seat shroud in Black\*
- Height adjustment tilt mechanism with gas cylinder\*
- 5 Star Plastic base\*
- Hard wheel casters\*

### Optional Features

(\*Selected Models Only)

- Plastic glides with felt\*
- Counter height stool\*
- Multiple Fabrics\*

## FINISHES

---

### Options

- Plastic shell available in Black, Pistachio, Navy, Orange Crush or Crayon Gray
- Tubular steel frame available in Black powder coat with fully upholstered version
- Plastic five star base and mechanism available in Black
- Upholstered seat and back can be upholstered in a select range of fabrics.

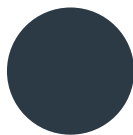
### Plastic Shell Color



Black



Pistachio



Navy

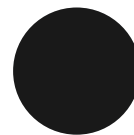


Orange  
Crush



Crayon  
Gray

### Arm Finishes



Black

### Frame Finish



Black  
(powder coat)

## DIMENSIONS

---

### CTR201

Overall Height: 34"  
Overall Width: 20.75"  
Overall Depth: 22"  
Seat Height: 18.25"  
Seat Width: 19.25"  
Seat Depth: 19"



### CTR201A

Overall Height: 34"  
Overall Width: 24.75"  
Overall Depth: 22"  
Seat Height: 18.25"  
Seat Width: 19.25"  
Seat Depth: 19"  
Arm Height: 26.25"



---

### CTR202

Overall Height: 34"  
Overall Width: 20.75"  
Overall Depth: 22"  
Seat Height: 18.25"  
Seat Width: 19.25"  
Seat Depth: 19"



### CTR202A

Overall Height: 34"  
Overall Width: 24.75"  
Overall Depth: 22"  
Seat Height: 18.25"  
Seat Width: 19.25"  
Seat Depth: 19"  
Arm Height: 26.25"



---

### CTR203

Overall Height: 46.5"  
Overall Width: 22.25"  
Overall Depth: 23.25"  
Seat Height: 31"  
Seat Width: 19.25"  
Seat Depth: 19"



### CTR204A

Overall Height: 34"  
Overall Width: 26.5"  
Overall Depth: 27.25"  
Seat Height: 18.25"  
Seat Width: 19.25"  
Seat Depth: 19"  
Arm Height: 26.25"  
Writing Tablet Width: 19.75"  
Writing Tablet Depth: 11.75"



---

### CTR205

Overall Height: 32.7-37.7"  
Overall Width: 29.5"  
Overall Depth: 29.5"  
Seat Height: 16.25-21.25"  
Seat Width: 19.25"  
Seat Depth: 19"



### CTR205A

Overall Height: 32.7-37.7"  
Overall Width: 29.5"  
Overall Depth: 29.5"  
Seat Height: 16.25-21.25"  
Seat Width: 19.25"  
Seat Depth: 19"  
Arm Height: 26.25"



## CONTOUR

## SENATOR

Contour is a lightweight, flexible work and meeting chair designed in accordance with circular design principles.

The backrest is made using 100% recycled Polypropylene and both backrest and seat come with removable covers that can be chosen to be upholstered using 100% recyclable material, further ensuring reparability and longevity.

### OVERVIEW



CTR251



CTR251A



CTR252



CTR252A



CTR253



CTR254A



CTR105



CTR255A



### PearsonLloyd

PearsonLloyd is a product, furniture and innovation design studio led by founders Luke Pearson and Tom Lloyd, and run from a studio in Shoreditch, East London. For the last twenty years, the agency has designed products, systems and environments for the home, workplace, transport and healthcare sectors. In 2008, Luke and Tom were awarded the distinction of Royal Designers for Industry by The Royal Society of Arts in 2012 were named in the top 50 designers 'Shaping the Future' by Fast-Co Magazine in New York.

## CERTIFICATION

---

### Standard Features

(\*Selected Models Only)

- Plastic Shell
- Upholstered seat pad
- Upholstered shell
- Removeable upholstery covers\*
- Plastic arm pads\*
- Plastic loop arms\*
- Tubular Steel frame\*
- Tubular Steel frame with swivel writing table and wire basket\*
- Plastic under seat shroud in Black\*
- Height adjustment tilt mechanism with gas cylinder\*

- 5 Star Plastic base\*
- Hard wheel casters\*

### Optional Features

(\*Selected Models Only)

- Plastic glides with felt\*
- Counter height stool\*
- Multiple Fabrics\*

## FINISHES

---

### Options

- Plastic shell available in Black, Pistachio, Navy, Orange Cursh or Crayon Gray
- Tubular steel frame available in complementary Black, Pistachio, Navy, Orange Cursh or Crayon Gray powder coat
- Plastic five star base and mechanism available in Black
- Upholstered seat and back can be upholstered in a select range of fabrics.

### Plastic Shell Color



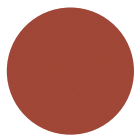
Black



Pistachio



Navy

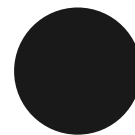


Orange  
Crush



Crayon  
Gray

### Arm Finishes



Black

### Frame Finish



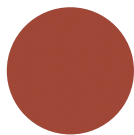
Black



Pistachio



Navy



Orange Crush



Crayon Gray

(powder coat) (powder coat) (powder coat) (powder coat) (powder coat)



## DIMENSIONS

---

### CTR251

Overall Height: 34"  
Overall Width: 20.75"  
Overall Depth: 22"  
Seat Height: 18.25"  
Seat Width: 19.25"  
Seat Depth: 19"



### CTR251A

Overall Height: 34"  
Overall Width: 24.75"  
Overall Depth: 22"  
Seat Height: 18.25"  
Seat Width: 19.25"  
Seat Depth: 19"  
Arm Height: 26.25"



---

### CTR252

Overall Height: 34"  
Overall Width: 20.75"  
Overall Depth: 22"  
Seat Height: 18.25"  
Seat Width: 19.25"  
Seat Depth: 19"



---

### CTR252A

Overall Height: 34"  
Overall Width: 24.75"  
Overall Depth: 22"  
Seat Height: 18.25"  
Seat Width: 19.25"  
Seat Depth: 19"  
Arm Height: 26.25"



---

### CTR253

Overall Height: 46.5"  
Overall Width: 22.25"  
Overall Depth: 23.25"  
Seat Height: 31"  
Seat Width: 19.25"  
Seat Depth: 19"



---

### CTR254A

Overall Height: 34"  
Overall Width: 26.5"  
Overall Depth: 27.25"  
Seat Height: 18.25"  
Seat Width: 19.25"  
Seat Depth: 19"  
Arm Height: 26.25"  
Writing Tablet Width: 19.75"  
Writing Tablet Depth: 11.75"



---

### CTR255

Overall Height: 32.7-37.7"  
Overall Width: 29.5"  
Overall Depth: 29.5"  
Seat Height: 16.25-21.25"  
Seat Width: 19.25"  
Seat Depth: 19"



---

### CTR255A

Overall Height: 32.7-37.7"  
Overall Width: 29.5"  
Overall Depth: 29.5"  
Seat Height: 16.25-21.25"  
Seat Width: 19.25"  
Seat Depth: 19"  
Arm Height: 26.25"

