

AD-LIB FOUR MOTION

The four leg variant with castors is seen as a general purpose meeting chair, ideally suited to social, training, team work and conference environments. The diversity of finish specification options together with the upholstery options give Ad-Lib a truly varied palette.



Design by PearsonLloyd

Standard Features (*Selected models only)

Stacks 5 high
 Two piece moulded seat and back frame
 Moulded seat foam with an integrated flexible seat membrane*
 Back frame with integral arms in a soft touch plastic*
 Injection moulded, contoured seat and back panels*
 Injection moulded, contoured back panel and upholstered seat*
 Fully upholstered seat and back*
 Tubular steel frame in black EPPC
 Underseat stack pan in injection moulded plastic
 50mm Hard wheel castors

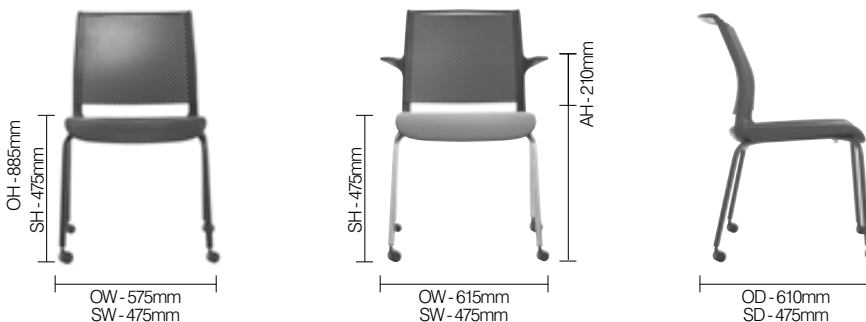
Optional Features

Two-tone upholstery*
 Choice of finish options available
 - see finish page

Performance Standards

EN13761:200-4
 ANSI/BIFMA X5.1:2011
 SCS-EC10.2-2007 Indoor Air Quality
 EN15373:2007-L2
 GS Certificate

DIMENSIONS



DESIGN

PearsonLloyd

The London based practice takes a collaborative approach to its work, embracing the restrictions imposed by production, the market and all the other factors that define a brief. Their work is grounded in research and at the core is

an attempt to understand the relationship between a product, its place, and the way people use it. It is this innovative thinking that earned PearsonLloyd a Red Dot Award for the design of Ad-Lib for Senator.

AD-LIB FOUR MOTION

The four leg variant with castors is seen as a general purpose meeting chair, ideally suited to social, training, team work and conference environments. The diversity of finish specification options together with the upholstery options give Ad-Lib a truly varied palette.

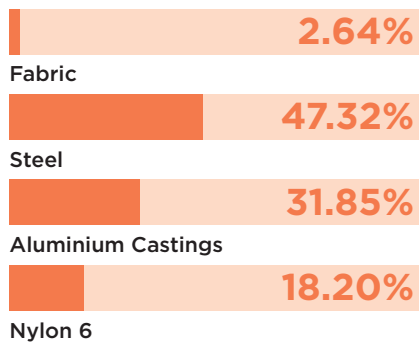
Design by PearsonLloyd



ENVIRONMENTAL

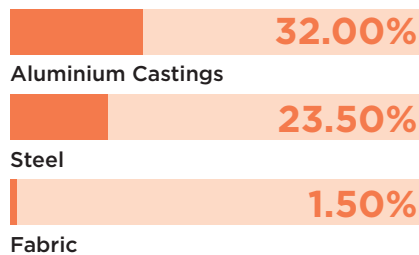
Material Content

Components are constructed of the following



Recycled Content

Contains up to 57% of Recycled Material



Recyclability

The range is 99% recyclable

99%

SENATOR 3 R'S

Senator is committed to continually improving the sustainability of all environmental aspects within our business.

To meet both international standards and our own environmental targets we apply the three R's principle

-Reduce, Reuse and Recycle.

Whilst recycling is the element which receives the most exposure it is actually the last option available and should never be the prime target in anyone's battle to reduce waste.

It is our duty as individuals and as a company to initially attempt to **Reduce** usage. Then we should look to **Reuse** wherever possible and finally, only after these two processes have been exhausted, should we consider **Recycling**.

Reduce Reuse Recycle

AD-LIB FOUR MOTION

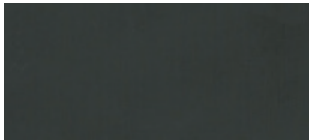
Finish Options

Tubular steel frame available in Black, Light Grey, Anthracite or Polished Chrome frame

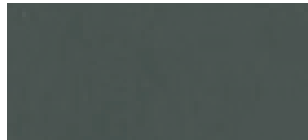
Moulded plastic components available in Light Grey, Anthracite and Black

Ad-lib can be upholstered in a broad range of contract upholstery fabrics, vinyl and leathers from The Senator Group standard upholstery collection

Component Finishes



Black



Anthracite



Light Grey

Arm Finishes



Black



Anthracite

Note: Black arms are supplied as standard with Black components, Anthracite arms are supplied as standard with Anthracite or Light Grey components

Steel Frame Finishes



Black (Powder Coat)



Anthracite (Powder Coat)



Light Grey (Powder Coat)



Polished Chrome