

FREEFLEX MESH

The new Freeflex Mesh task chair delivers fantastic comfort with simple elegant styling. The chair's ergonomic design and contoured mesh back allows heat to ventilate away from the spine, making it particularly suitable when postural support is required for long periods of time.

Freeflex Mesh provides a clever and adaptable solution to support the user's movements in their working environment.



DIMENSIONS



DESIGN

Justus Kolberg

Justus Kolberg has been running his own design studio in Hamburg since 1997 after completing his studies in industrial design at the Muthesius Academy of Fine Arts and Design in Kiel in 1990.

Justus has received numerous honors including the IF Hannover Product Design Award, the Red Dot Design Centrum NRW, the IDEA-Gold Industrial Design Excellence Award and the Japanese Good Design Award.

STANDARD FEATURES (*Selected models only)

- 5 Star base
- 2.5" Hard wheel casters*
- Stool height gas lift and adjustable foot ring*
- Weight controlled synchronized mechanism with travel limitation in four steps, including locking upright*
- 2.4" seat depth adjustment
- 3D self-supporting mesh back
- Width and height adjustable arms*
- Adjustable lumbar support
- Stool height variation*

OPTIONAL FEATURES

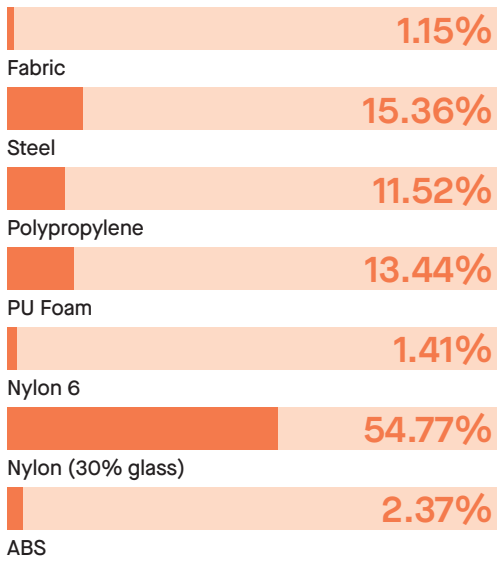
- 2.5" soft wheel casters
- Gas lift options
- Two-tone upholstery
- Choice of finish options available (See finish page)

PERFORMANCE STANDARDS

- ANSI/BIFMA x 5.1 x2011
- SCS-EC10.3-2014 v. 4.0 Indoor Advantage Gold

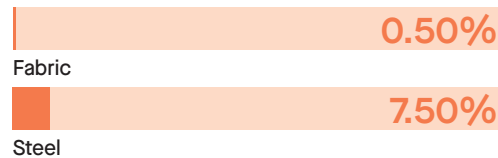
MATERIAL CONTENT

Components are constructed of the following



RECYCLED CONTENT

Contains up to 8.00% of Recycled Material



RECYCLABILITY

The range is 99% recyclable

99%

SENATOR 3 R'S

Senator is committed to continually improving the sustainability of all environmental aspects within our business.

To meet both international standards and our own environmental targets we apply the three R's principle

-Reduce, Reuse and Recycle.

While recycling is the element which receives the most exposure it is actually the last option available and should never be the prime target in anyone's battle to reduce waste.

It is our duty as individuals and as a company to initially attempt to **Reduce** usage. Then we should look to **Reuse** wherever possible and finally, only after these two processes have been exhausted, should we consider **Recycling**.

REDUCE REUSE RECYCLE

FINISH OPTIONS

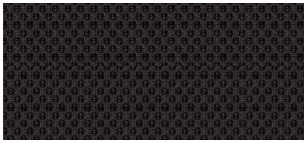
5 Star base available in Graphite Plastic or Polished Aluminum

Plastic components available in Graphite with Black or Light Gray back and arms

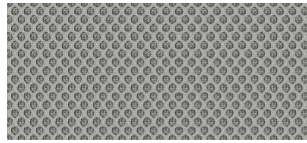
Freeflex can be upholstered in a broad range of contract upholstery fabrics, vinyl and leathers from The Senator Group standard upholstery collection.

Please refer to individual price list pages for full specification options.

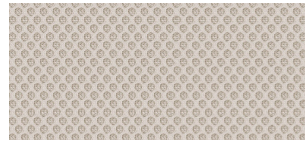
MESH COLORS



Black



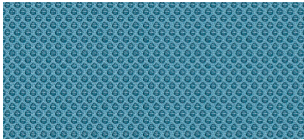
Gray



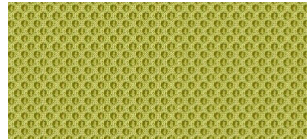
Snow



Burnt Orange

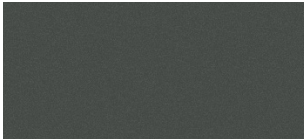


Soft Cyan



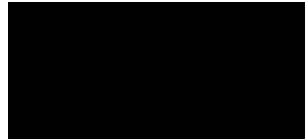
Fresh Apple

COMPONENT FINISHES

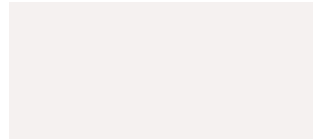


Graphite (Plastic)

ARM / BACK FINISHES

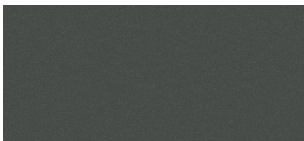


Black (Plastic)



Light Gray (Plastic)

BASE FINISHES

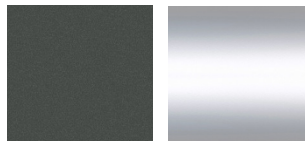


Graphite (Plastic)



Polished Aluminum

GAS LIFT FINISHES



Graphite / Brushed Steel