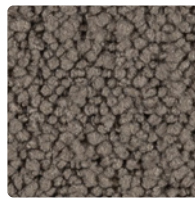


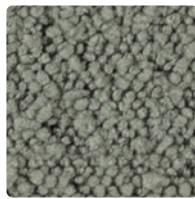
MAYER
FABRICS
+
SENATOR



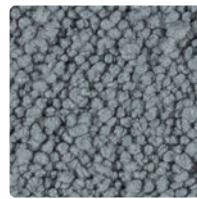
RITZI
401-027 Lunar



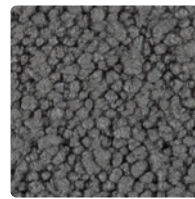
401-010
Shiitake



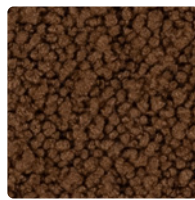
401-013
Thyme



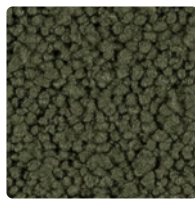
401-043
Opal



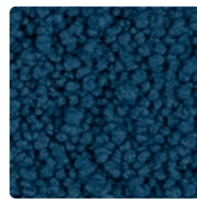
401-026
Shale



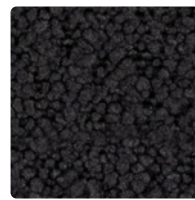
401-020
Coffee



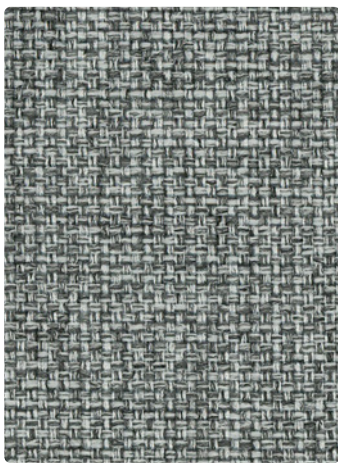
401-023
Forest



401-014
Ocean



401-006
Peppercorn



LEGACY
471-046 Cloud



471-007
Gravel



471-013
Spruce



471-024
Lake



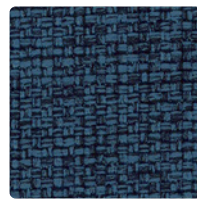
471-009
Pumpkin



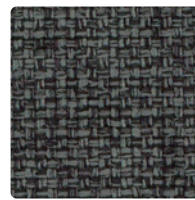
471-026
Asphalt



471-034
Lagoon



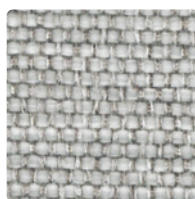
471-004
Cobalt



471-016
Slate



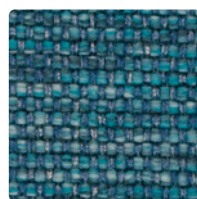
HAVANA
459-026 Metal



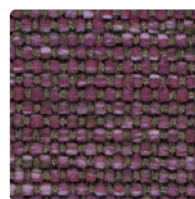
459-036
Silver



459-023
Sea



459-014
Peacock



459-008
Plum



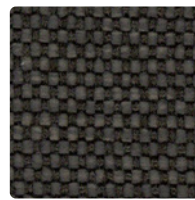
459-017
Mocha



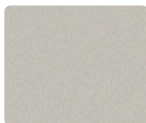
459-003
Meadow



459-034
Ink



459-006
Onyx



RYDER
RY-017 Lt. Grey



RYDER
RY-036 Slate



RYDER
RY-047 Camel



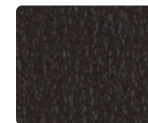
RYDER
RY-009 Orange



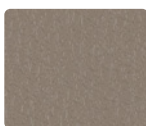
RYDER
RY-013 Herb



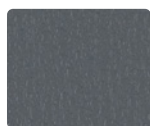
RYDER
RY-024 Sapphire



RYDER
RY-010 Chocolate



RYDER
RY-037 Griffin



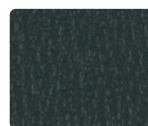
RYDER
RY-046 Shark Fin



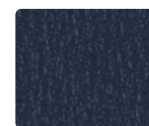
RYDER
RY-000 Mocha



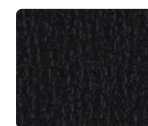
RYDER
RY-001 Scarlet



RYDER
RY-023 Spruce



RYDER
RY-044 Navy



RYDER
RY-006 Black

Additional colors are available. Please refer to the Mayer Fabrics website.

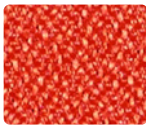
FORTE - QUICKSHIP



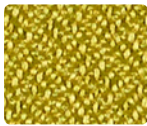
289-017
Pumice



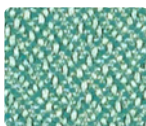
289-010
Mocha



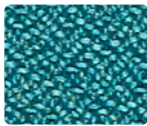
289-009
Pimento



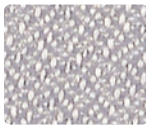
289-013
Avocado



289-033
Fairway



289-044
Peacock



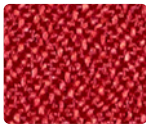
289-026
Flint



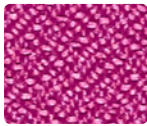
289-027
Oatmeal



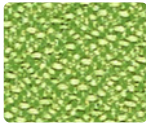
289-000
Fudge



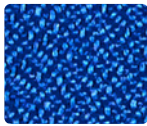
289-001
Rouge



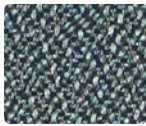
289-035
Magenta



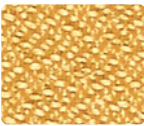
289-053
Grass



289-014
Blue Ray



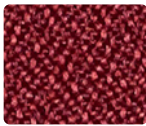
289-016
Slate



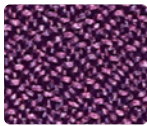
289-012
Sunray



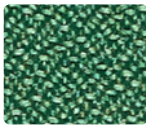
289-036
Char



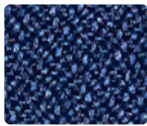
289-011
Port



289-025
Grape



289-043
Hedge



289-004
Cadet



289-006
Tuxedo

TECHNICAL INFORMATION

Pattern 54"	Content and Backing	Certifications	Weight/ Linear Yd.	Pattern Repeat	Finish	Abrasion Wyzenbeek	Light- Fastness	Flammability	Cleaning Code
FORTE Multi-use ⁺	100% Polyester Backing: Acrylic	GREENGUARD Gold	12.1 oz.	None	Stain Repellent	1,000 [^] Double Rubs	40 hours	Cal. 117-2013 NFPA 260/UFAC Class 1 ASTM E84 (Adhered) Class 2 or B	WS
HAVANA Directional	70% Polypropylene, 30% Polyester Backing: Latex	GREENGUARD Gold OEKO-TEX [®] Certified	16.04oz.	None	Inherently Cleanable	100,000 [^] Double Rubs	40 hours	Cal. 117-2013 NFPA 260/UFAC Class 1	WS, BC, IC
LEGACY	94% Polyester, 4% Polyurethane, 2% Silicone Backing: Fluid Barrier (Supreen) Polyurethane	GREENGUARD Gold	21.5 oz.	None	Supreen (Silicone) PFAS Free	100,000 [^]	40 hours	Cal. 117-2013 NFPA 260/UFAC Class 1	WS, BC
RITZI	94% Polyester, 4% TPU, 2% Silicone Backing: Fluid Barrier (Supreen) Polyurethane	GREENGUARD Gold	18 oz.	None	Supreen (Silicone) PFAS Free	100,000 [^] Double Rubs	40 hours	Cal. 117-2013 NFPA 260/UFAC Class 1	WS, BC
RYDER	88% Vinyl - Phthalate Free face, 12% Polyester backing		30 oz.	None	Soil & Stain Resistant Top Coat	500,000 [^] Double Rubs	200 hours	Cal. 117-2013 NFPA 260/UFAC Class 1 FMVSS 302	WS, BC, CFC

REDUCED ENVIRONMENTAL IMPACT

These products are GREENGUARD Certified or GREENGUARD Gold Certified for low chemical and particle emissions to UL standard UL 2818 and may contribute to LEED certification.

No FR Additives No Antimicrobial/Antibacterial Additives

CARE AND CLEANING INFORMATION

WS: Water/Solvent Cleaner IC: Inherently Cleanable CFC: Coated Fabrics Cleaning – Refer to Mayer website for complete cleaning info.
BC: Bleach Cleanable – 1 part bleach, 9 parts water = 10% bleach, 90% water solution. **Do not clean/disinfect fabric for longer than 10 minutes using the 10% bleach solution. Always rinse promptly with clean water after applying the bleach solution. Failure to do so will void any and all warranties.**

DYE TRANSFER DISCLAIMER

Certain clothing and accessory dyes (such as those used on denim jeans) may migrate to lighter colors. This phenomenon is increased by humidity and temperature and is irreversible. Mayer Fabrics will not assume responsibility for dye transfer caused by external contaminants. Please check compatibility when using this product in combination with painted or varnished surfaces.

ADDITIONAL INFORMATION

[^] Abrasion test results exceeding ACT Performance Guidelines are not an indicator of product lifespan. Multiple factors affect fabric durability and appearance retention.
⁺ A multi-use fabric that can be used for upholstery, panels, wrapped walls, and acoustic.
Warranty: Please refer to the Mayer website for warranty information by pattern.
Custom Colors: All patterns can be custom colored. Minimum yardage applies.
Digital Swatch Card Color Matching: Due to color variations on different monitors and color printers, actual swatch colors may vary slightly. Please request a memo sample from Mayer Fabrics to ensure proper color representation.
Complete and current product information available at mayerfabrics.com.

These fabrics meet or exceed these ACT performance guidelines.
^{*} Certification Marks owned by ACT[®]

©2025
SENATORCDO MF0325