

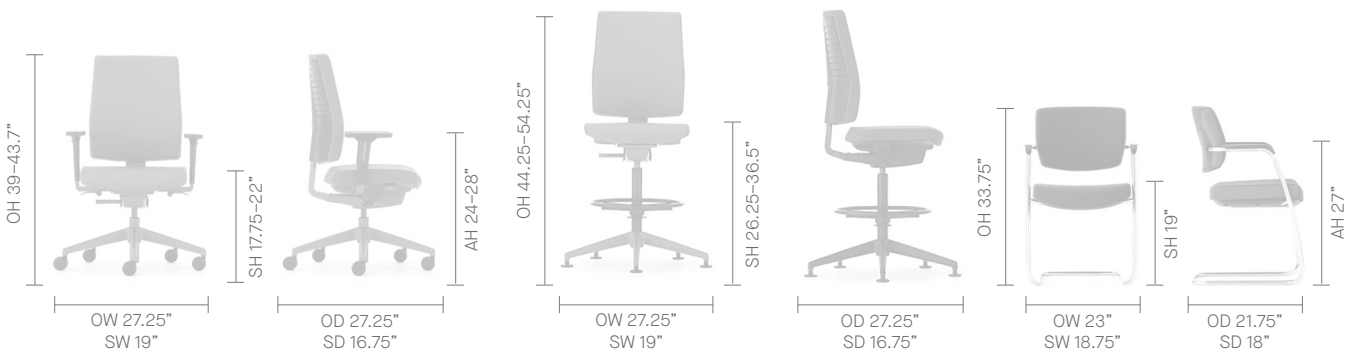
FREEFLEX

Freeflex provides a clever and adaptable solution to support the user's movements in their working environment. Flexibility is central to the design of Freeflex, giving the user the freedom to make simple adjustments; to their seat height, seat depth and back height to achieve ultimate comfort.

In designing Freeflex, special attention was paid to the user's natural pivot points, where they flex and where they don't. This inspired the development of a dynamic weight balancing tilting action and articulated flexing back, which intuitively encourages movement. While providing great support.



DIMENSIONS



DESIGN

Justus Kolberg

Justus Kolberg has been running his own design studio in Hamburg since 1997 after completing his studies in industrial design at the Muthesius Academy of Fine Arts and Design in Kiel in 1990.

Justus has received numerous honors including the IF Hannover Product Design Award, the Red Dot Design Centrum NRW, the IDEA-Gold Industrial Design Excellence Award and the Japanese Good Design Award.

STANDARD FEATURES (*Selected models only)

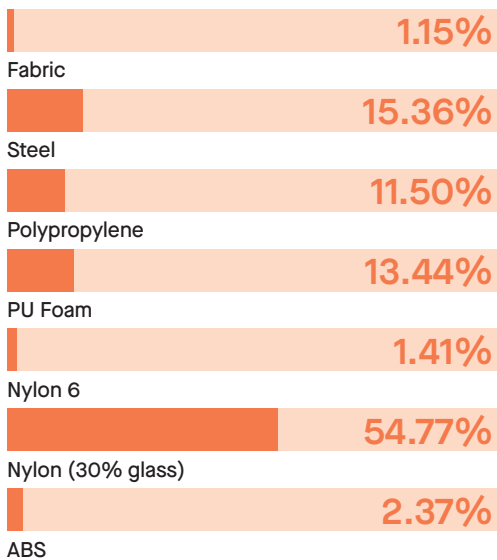
- 5 Star base
- 2.5" Hard wheel casters*
- Tubular steel frame*
- Stool height gas lift and adjustable foot ring*
- Weight controlled synchronized mechanism with travel limitation in four steps, including locking upright*
- Limited recline function*
- Molded seat and back foam
- 2.4" seat depth adjustment
- Integrated flexible back membrane*
- 2.75" back height adjustment*
- Soft touch arm pads*
- Contrasting mesh side panels on the seat and back, with a complementary colored back insert
- Width and height adjustable arms
- Stool height variation*

OPTIONAL FEATURES

- Casters for hard and soft floor coverings
- Gas lift options
- Two-tone upholstery
- Choice of finish options available (See finish page)

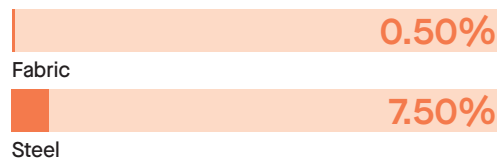
MATERIAL CONTENT

Components are constructed of the following



RECYCLED CONTENT

Contains up to 8.00% of Recycled Material



RECYCLABILITY

The range is 99% recyclable

99%

SENATOR 3 R'S

Senator is committed to continually improving the sustainability of all environmental aspects within our business.

To meet both international standards and our own environmental targets we apply the three R's principle

-Reduce, Reuse and Recycle.

While recycling is the element which receives the most exposure it is actually the last option available and should never be the prime target in anyone's battle to reduce waste.

It is our duty as individuals and as a company to initially attempt to **Reduce** usage. Then we should look to **Reuse** wherever possible and finally, only after these two processes have been exhausted, should we consider **Recycling**.

REDUCE REUSE RECYCLE

FINISH OPTIONS

5 Star base available in Graphite or Polished Aluminum

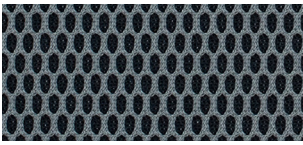
Plastic components available in Graphite with Black or Light Gray back and arms

Contrasting mesh side panels and back inserts available in either Fog, Carbon, Storm, Sunset, Aqua or Avocado

Freeflex can be upholstered in a broad range of contract upholstery fabrics, vinyl and leathers from The Senator Group standard upholstery collection.

Please refer to individual price list pages for full specification options.

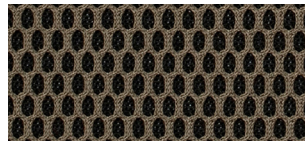
BREATHABLE MESH SIDE PANELS



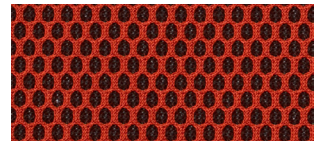
Fog



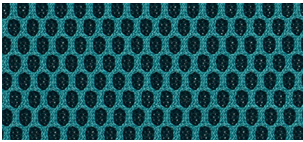
Carbon



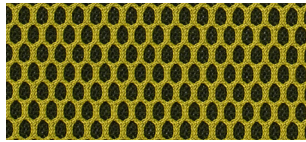
Storm



Sunset



Aqua



Avocado

BACK INSERT COLORS



Fog



Carbon



Storm



Sunset



Aqua

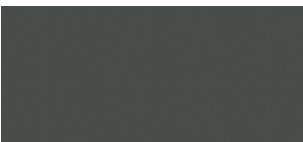


Avocado



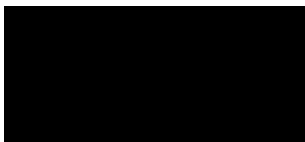
Brushed

COMPONENT FINISH

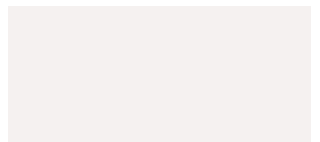


Graphite

ARM AND BACK FINISHES

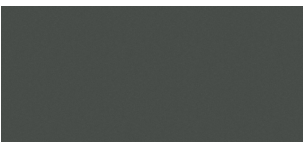


Black



Light Gray

BASE FINISHES



Graphite (Plastic)



Polished Aluminum