

AD-LIB LITEWORK

With the development of the Ad-Lib family we set out to redefine the genre of multi-purpose seating as we recognised changing needs.

The LiteWork version is the ideal solution for ad hoc touch down working environments, as well as team based project meeting environments.

The inclusion of the dynamic yoke incorporates a free floating tilt action and seat height adjustment which enhances the ergonomic performance of this chair.



Design by PearsonLloyd

Standard Features (*Selected models only)

- Plastic seat and back frame
- Plastic contoured seat and back panel*
- Plastic contoured back panel and upholstered seat*
- Fully upholstered*
- Dyanmic seat yoke with height adjustable gas lift and floating seat action
- Gas lift - 150kg
- 5 Star Plastic base
- 65mm Hard wheel castors
- Back frame with integral arms covered in soft touch Plastic*

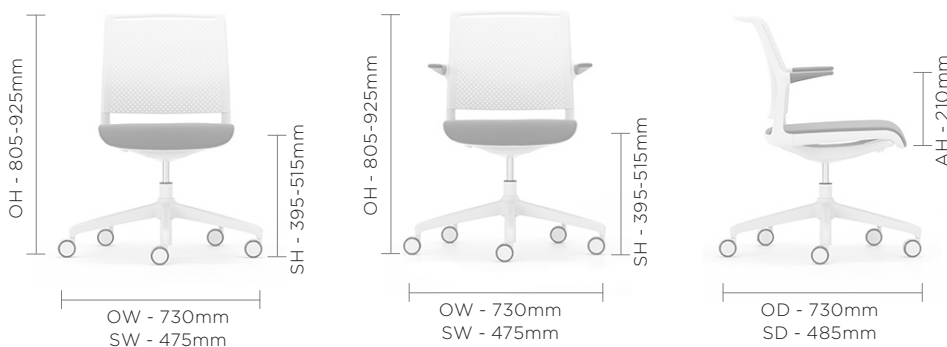
Optional Features

- Flexible back rest membrane*
- Multiple fabrics*
- Choice of finish options available – see finish page

Performance Standards

- EN13761:2002-4
- ANSI/BIFMA X5.1:2011
- SCS-EC10.2-2007 Indoor Air Quality
- EN15373:2007-L2
- GS Certificate

DIMENSIONS



DESIGN

PearsonLloyd

The London based practice takes a collaborative approach to its work, embracing the restrictions imposed by production, the market and all the other factors that define a brief. Their work is grounded in research and at the core is

an attempt to understand the relationship between a product, its place, and the way people use it. It is this innovative thinking that earned PearsonLloyd a Red Dot Award for the design of Ad-Lib for Senator.

AD-LIB LITEWORK

With the development of the Ad-Lib family we set out to redefine the genre of multi-purpose seating as we recognised changing needs.

The LiteWork version is the ideal solution for ad hoc touch down working environments, as well as team based project meeting environments.

The inclusion of the dynamic yoke incorporates a free floating tilt action and seat height adjustment which enhances the ergonomic performance of this chair.

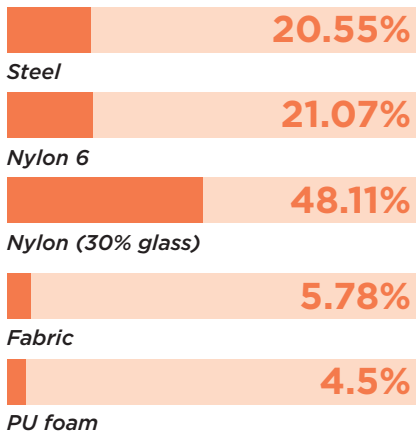


Design by PearsonLloyd

ENVIRONMENTAL

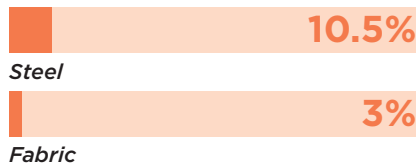
Material Content

Components are constructed of the following



Recycled Content

Contains up to 13.5% of Recycled Material



Recyclability

The range is 99% recyclable

99%

Environmental information for this range has been based on ADL5. For more detail please refer to individual EPA sheets.

SENATOR 3 R'S

Senator is committed to continually improving the sustainability of all environmental aspects within our business.

To meet both international standards and our own environmental targets we apply the three R's principle

-Reduce, Reuse and Recycle.

Whilst recycling is the element which receives the most exposure it is actually the last option available and should never be the prime target in anyone's battle to reduce waste.

It is our duty as individuals and as a company to initially attempt to **Reduce** usage. Then we should look to **Reuse** wherever possible and finally, only after these two processes have been exhausted, should we consider **Recycling**.

Reduce Reuse Recycle

AD-LIB LITEWORK

Finish Options

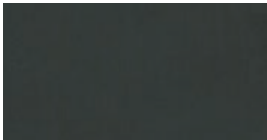
5 Star base available in Black, Anthracite and Light Grey Plastic

Plastic components available in Black, Anthracite or Light Grey

Ad-lib can be upholstered in a broad range of contract upholstery fabrics, vinyl and leathers from The Senator Group standard upholstery collection

Please refer to individual price list pages for full specification options

Component Finishes



Black (Plastic)

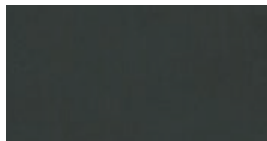


Anthracite (Plastic)



Light Grey (Plastic)

Arm Finishes



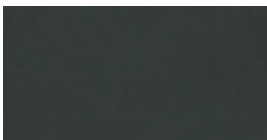
Black (Plastic)



Anthracite (Plastic)

Note: Black arms are supplied as standard with Black components, Anthracite arms are supplied as standard with Anthracite or Light Grey components

Base Finishes



Black (Plastic)



Anthracite (Plastic)



Light Grey (Plastic)