

## CIRCO

Circo is a functionally simple light work chair for ad hoc touch down environments. Featuring a permanently floating action and a mesh back that morphs to support the user. Circo is suitable for both conference and meeting environments.

Circo's designer Justus Kolberg worked closely with toolmakers and injection moulders to exploit the latest technical possibilities of a complex single piece frame.



**Design by Justus Kolberg**

### Standard Features (\*Selected models only)

- 3D Self-supporting mesh back
- Molded seat foam
- 5 Star base\*
- Tubular Steel frame\*
- 60mm Hard wheel castors\*
- 50mm Hard wheel castors\*
- Height adjustment and free-floating tilt\*
- Swivel only\*
- Plastic glides\*

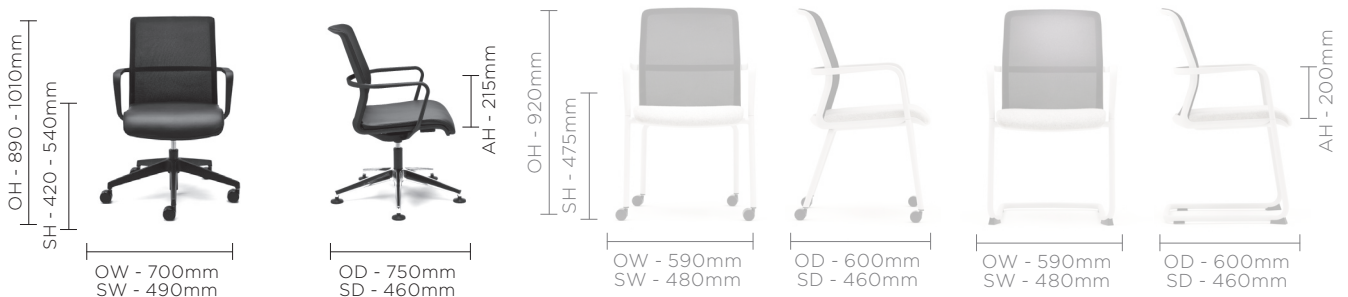
### Optional Features

- Castors for hard and soft floor coverings\*
- Gas lift options\*
- Auto return centre column (fixed height)\*
- Choice of finish options available
- see finish page

### Performance Standards

- EN 16139:2013 LI
- GS Certificate
- ANSI/BIFMA X5.1:2001

## DIMENSIONS



## DESIGN

**Justus Kolberg**

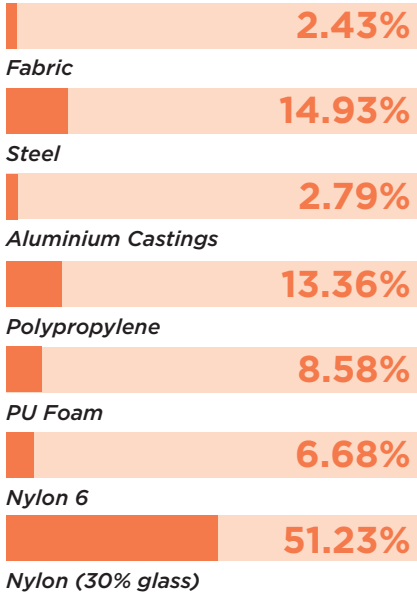
Justus Kolberg has been running his own design studio in Hamburg since 1997 after completing his studies in industrial design at the Muthesius Academy of Fine Arts and Design in Kiel in 1990.

Justus has received numerous honours including the IF Hannover Product Design Award, the Red Dot Design Centrum NRW, the IDEA-Gold Industrial Design Excellence Award and the Japanese Good Design Award.

ENVIRONMENTAL

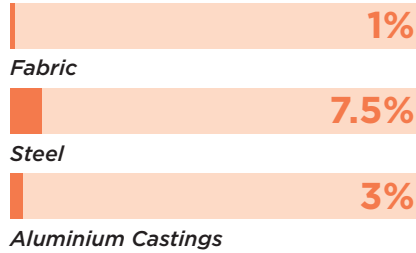
Material Content

Components are constructed of the following



Recycled Content

Contains up to 11.5% of Recycled Material



Recyclability

The range is 99% recyclable

99%

Environmental information for this range has been based on CR1  
For more detail please refer to individual EPA sheets.

SENATOR 3 R'S

Senator is committed to continually improving the sustainability of all environmental aspects within our business.

To meet both international standards and our own environmental targets we apply the three R's principle

**-Reduce, Reuse and Recycle.**

Whilst recycling is the element which receives the most exposure it is actually the last option available and should never be the prime target in anyone's battle to reduce waste.

It is our duty as individuals and as a company to initially attempt to **Reduce** usage. Then we should look to **Reuse** wherever possible and finally, only after these two processes have been exhausted, should we consider **Recycling**.

Reduce  
Reuse  
Recycle

## CIRCO

### Finish Options

5 Star base available available in Black, Graphite or Light Grey Plastic and Polished Aluminium

Plastic components available in Black, Graphite or Light Grey

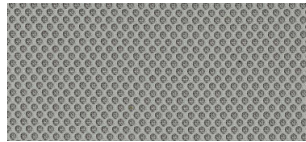
Self-supporting 3D mesh back available in: Black, Grey, Burnt Orange, Fresh Apple, Snow and Soft Cyan

Circo can be upholstered in a broad range of contract upholstery fabrics, vinyls and leathers from The Senator Group standard upholstery collection

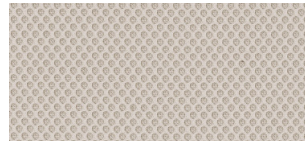
### Mesh Colours



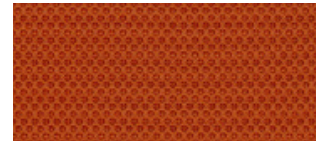
Black



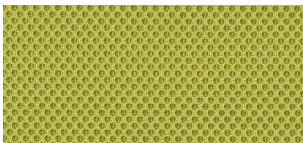
Grey



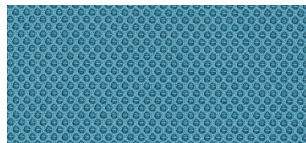
Snow



Burnt Orange

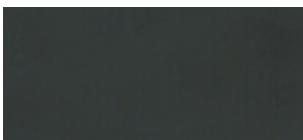


Fresh Apple

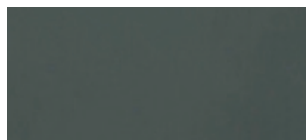


Soft Cyan

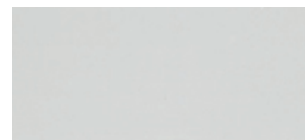
### Component Finishes



Black (Plastic)



Graphite (Plastic)



Light Grey (Plastic)

### Base Finishes



Black (Plastic)



Graphite (Plastic)



Light Grey (Plastic)



Polished Aluminium