

SENATOR

HAVEN PODS

Haven Pods nestle and tessellate to maximise available space, allowing the creation of a community of environments and destinations.

This new family of Haven Pods has been developed to respond to what people tell us they want, to facilitate how people want and need to work; to focus as individuals or in group spaces.



Standard Features

- Internal Steel frame with multi-layered acoustic foam construction
- Outer vertical panels upholstered in Multiple Camira Blazer fabrics
- Quick release panel connector system
- Levelling adjusters
- Integral work surface*
- Integral work surface power and data module, incorporating; 1 x 3.15 Amp power socket, powered USB and Cat 6 Data with 1.5m supply leads*
- Work surface mounted power and data module, incorporating; 2 x 3.15 Amp power*
- Integral under work surface vertical cable management
- Fixed Worksurface with Cable Tray and Riser*
- Low voltage LED task light*

Optional Features (*Selected models only)

- 1, 2, 3 or 4 person configuration
- Storage
- Integral seat and backrest
- Multiple fabrics on integrated seat units

Accessories

- Electrical Accessories
- Coat Hanger
- Name Plate
- A2 Magnetic Dry Wipe Board with hanger
- A3 Magnetic Dry Wipe Board with hanger



DESIGN

Senator

Our team of talented in house designers are responsible for creating elegant, innovative furniture designs which not only look beautiful, but minimise the impact on the world around us.

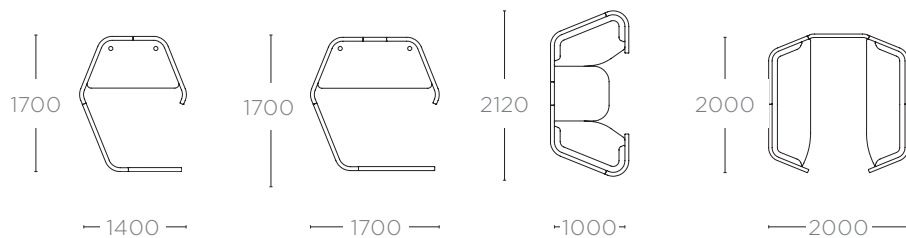
They come from all over the world, but are based in our Design Centre located in a quiet Lancashire village just outside the Ribble Valley. Our dedicated facility is over three floors which include studios, a materials test centre and prototyping lab.

SENATOR

DIMENSIONS

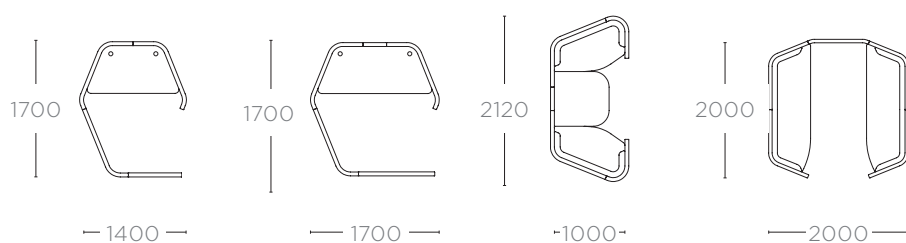
SOLO, SOLO +, DUO QUAD

Height. 1400mm



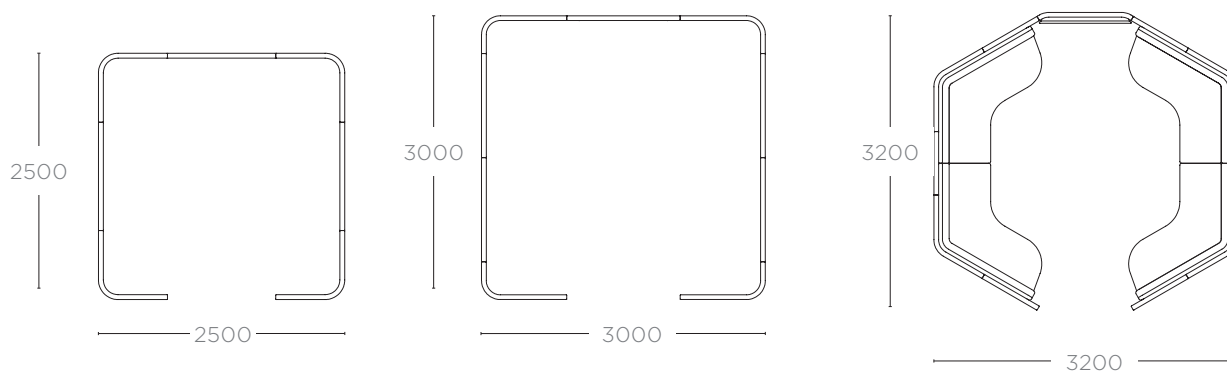
SOLO, SOLO +, DUO QUAD

Height. 1800mm



WORK, TEAM SPACES

Height. 1800mm



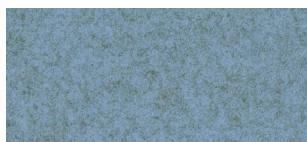
SENATOR

PODS

FINISH OPTIONS

Outer vertical panels upholstered in Camira
Blazer Fabric Two tone is standard

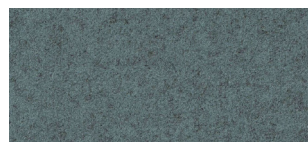
Blazer Fabric Finishes



Plymouth



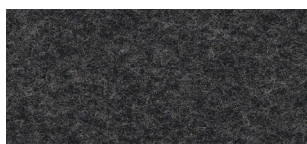
Fairfield



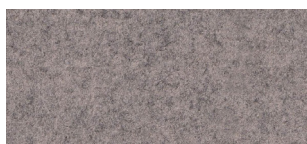
Latymer



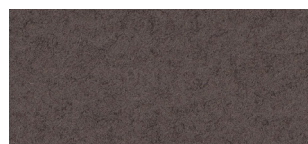
Silcoates



Silverdale



St Andrews



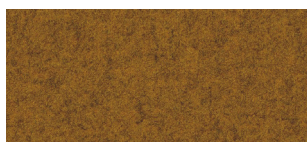
Trevelyan



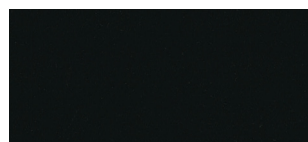
Ulster



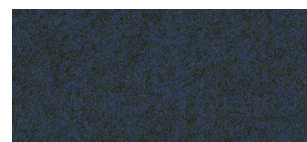
Wellington



Wesley



Napier



Newcastle



Newport

SENATOR

PODS

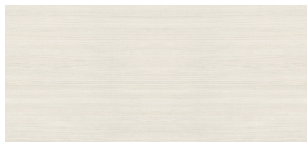
FINISH OPTIONS

Outer vertical panels upholstered in Camira
Blazer Fabric Two tone is standard

Standard Top and Storage Finishes - 25mm MFC



Carini Walnut



Hacienda White



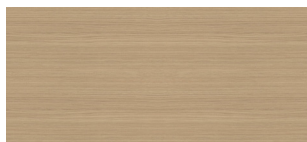
Autumn



Strata Oak



Maple



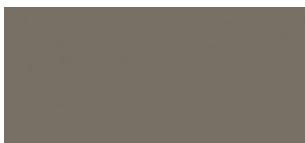
Highland Oak



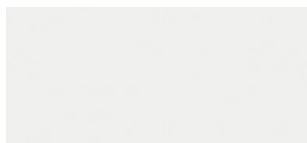
Beech



Winter Oak



Clay



White



Light Grey

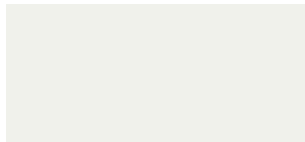


Denim

Frame/Leg Frames



Black



White

Colour images above are for reference only. Please verify with actual colour sample.

SENATOR

HAVEN PODS

Haven Pods nestle and tessellate to maximise available space, allowing the creation of a community of environments and destinations.

This new family of Haven Pods has been developed to respond to what people tell us they want, to facilitate how people want and need to work; to focus as individuals or in group spaces.



SENATOR 3 R'S

Senator is committed to continually improving the sustainability of all environmental aspects within our business.

To meet both international standards and our own environmental targets we apply the three R's principle

-Reduce, Reuse and Recycle.

Whilst recycling is the element which receives the most exposure it is actually the last option available and should never be the prime target in anyone's battle to reduce waste.

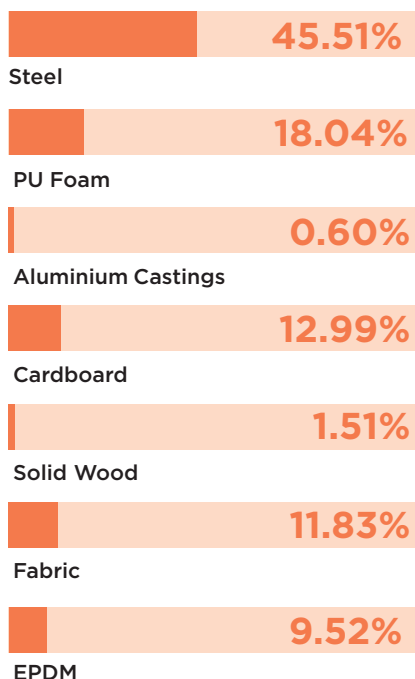
It is our duty as individuals and as a company to initially attempt to **Reduce** usage. Then we should look to **Reuse** wherever possible and finally, only after these two processes have been exhausted, should we consider **Recycling**.

Reduce
Reuse
Recycle

ENVIRONMENTAL

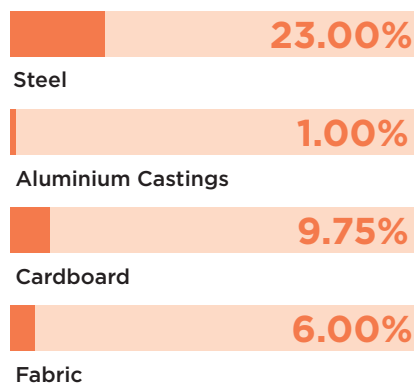
Material Content

Components are constructed of the following



Recycled Content

Contains up to 39.75% of Recycled Material



Recyclability

The range is 99% recyclable

99%

Environmental information for this range has been based on HAPDQ14.