

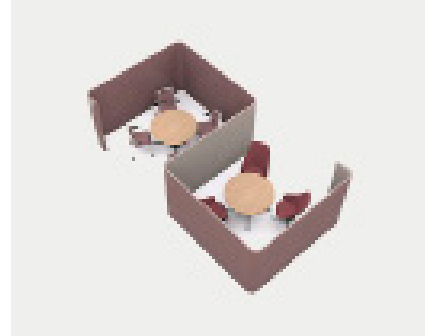
SENATOR

PODS

Pods nestle and tessellate to maximise available space, allowing the creation of a community of environments and destinations.

This new family of Pods has been developed to respond to what people tell us they want, to facilitate how people want and need to work;

to focus as individuals or in group spaces. The enhanced work surface size allows fixed pc's to be used and complies with legislation for use as a primary workspace.



Standard Features

- Internal Steel frame with multi-layered acoustic foam construction
- Outer vertical panels upholstered in Camira Blazer fabric (two-tone is standard)
- Quick release panel connector system
- Levelling adjusters

Optional Features (*Selected models only)

- 1, 2, 3 or 4 person configuration
- Height Adjustable Work Surface*
- Storage
- Fixed Worksurface with Cable Tray and Riser*
- Multiple fabrics on integrated seat units

Accessories

- Monitor Arms
- PU Desk Accessories
- Desk Top Accessories
- CPU Holders
- Electrical Accessories
- Coat Hanger
- Name Plate
- A2 Magnetic Dry Wipe Board with hanger
- A3 Magnetic Dry Wipe Board with hanger



DESIGN

Senator

Our team of talented in house designers are responsible for creating elegant, innovative furniture designs which not only look beautiful, but minimise the impact on the world around us.

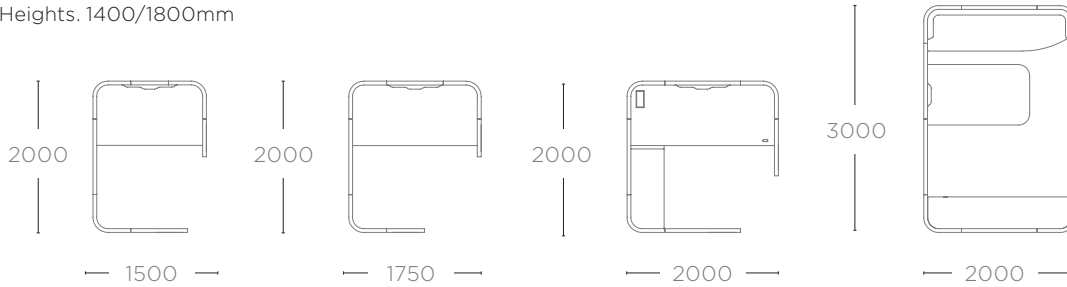
They come from all over the world, but are based in our Design Centre located in a quiet Lancashire village just outside the Ribble Valley. Our dedicated facility is over three floors which include studios, a materials test centre and prototyping lab.

SENATOR

DIMENSIONS

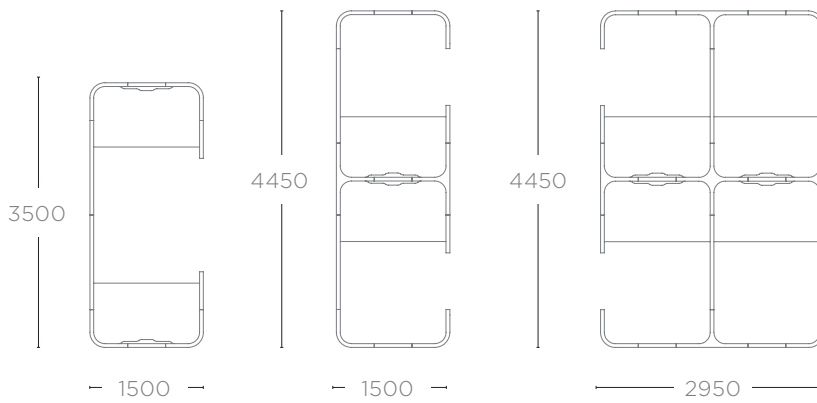
SOLO ABODE

Heights. 1400/1800mm



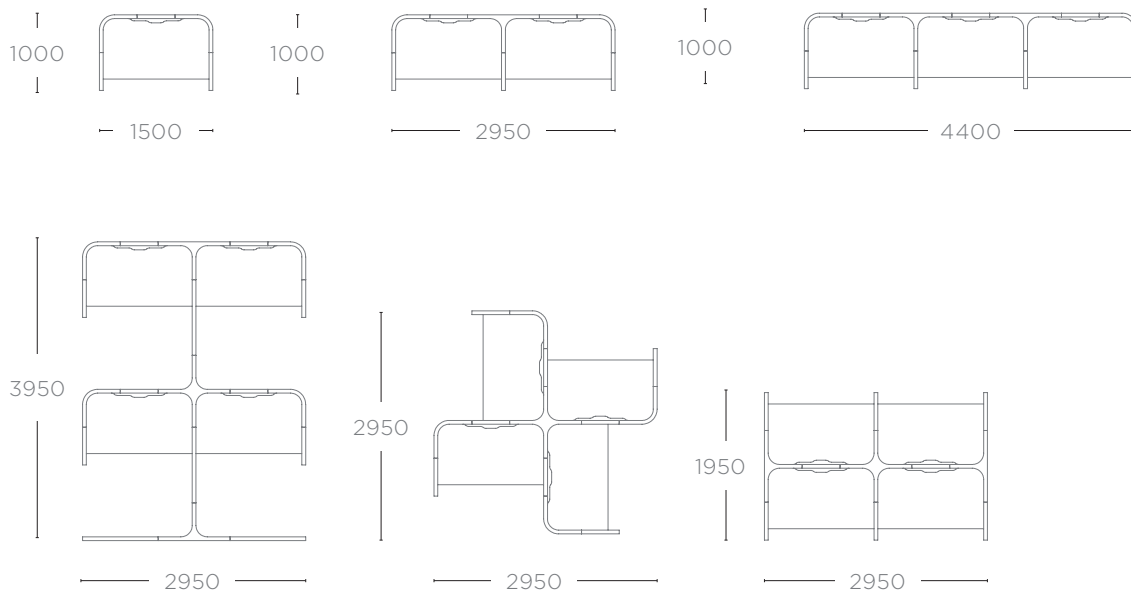
DUO & QUAD ABODE

Heights. 1400/1800mm



ENCLAVES

Heights. 1400/1800mm

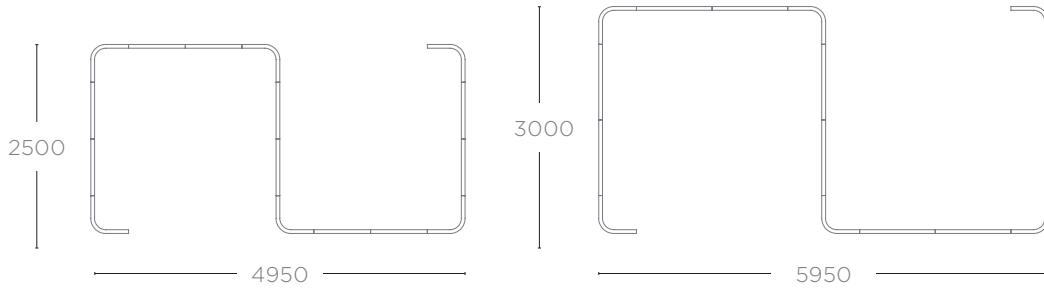


SENATOR

DIMENSIONS

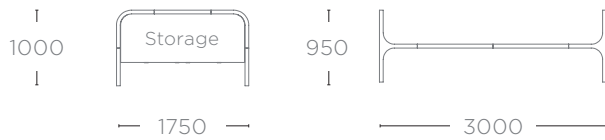
TEAM SPACES AND TEAM SPACES+

Height. 1800mm

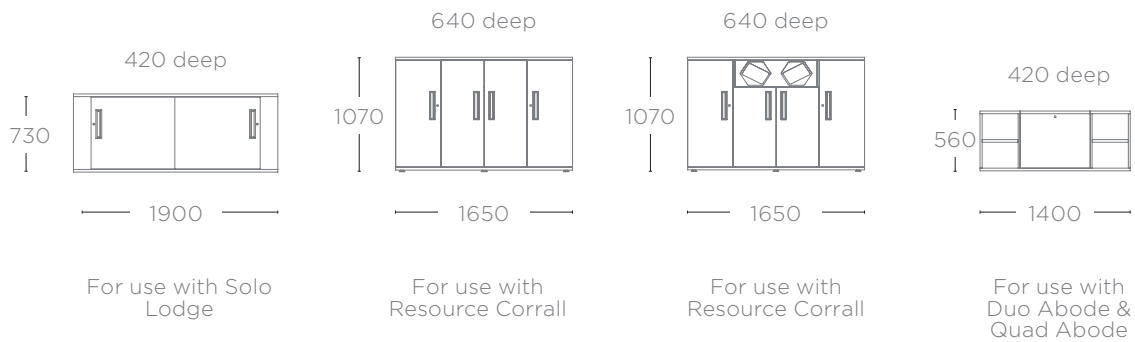


RESOURCE CORRAL AND WALL

Heights. 1400/1800mm



STORAGE



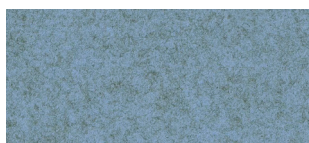
SENATOR

PODS

FINISH OPTIONS

Outer vertical panels upholstered in Camira
Blazer Fabric Two tone is standard

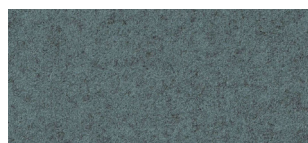
Blazer Fabric Finishes



Plymouth



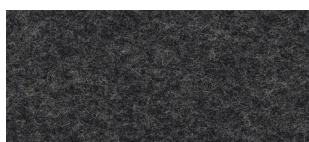
Fairfield



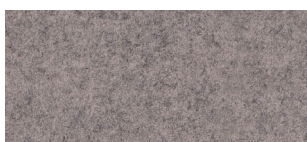
Latymer



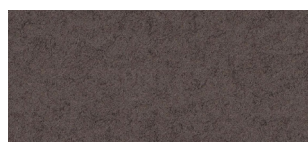
Silcoates



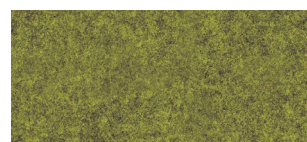
Silverdale



St Andrews



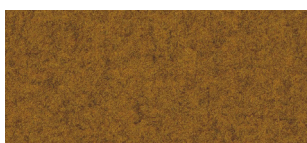
Trevelyan



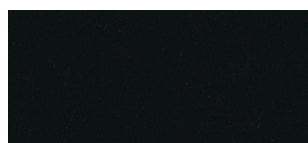
Ulster



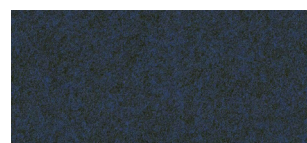
Wellington



Wesley



Napier



Newcastle



Newport

SENATOR

PODS

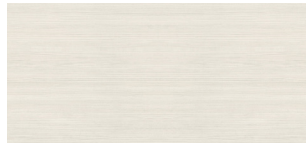
FINISH OPTIONS

Outer vertical panels upholstered in Camira
Blazer Fabric Two tone is standard

Standard Top and Storage Finishes - 25mm MFC



Carini Walnut



Hacienda White



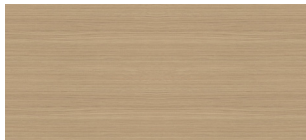
Autumn



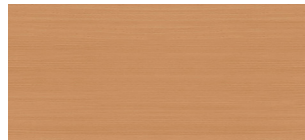
Strata Oak



Maple



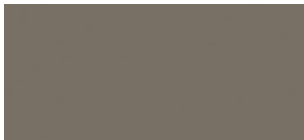
Highland Oak



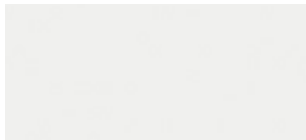
Beech



Winter Oak



Clay



White

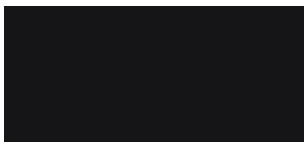


Light Grey

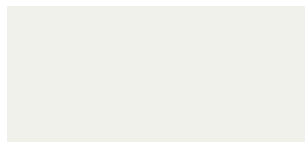


Denim

Frame/Leg Frames



Black



White

Colour images above are for reference only. Please verify with actual colour sample.

SENATOR

PODS

Pods nestle and tessellate to maximize available space, allowing the creation of a community of environments and destinations.

This new family of Pods has been developed to respond to what people tell us they want, to facilitate how people want and need to work;

to focus as individuals or in group spaces. The enhanced work surface size allows fixed pc's to be used and complies with legislation for use as a primary workspace.



SENATOR 3 R'S

Senator is committed to continually improving the sustainability of all environmental aspects within our business.

To meet both international standards and our own environmental targets we apply the three R's principle

-Reduce, Reuse and Recycle.

Whilst recycling is the element which receives the most exposure it is actually the last option available and should never be the prime target in anyone's battle to reduce waste.

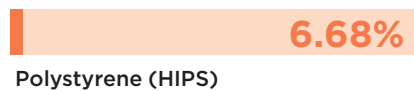
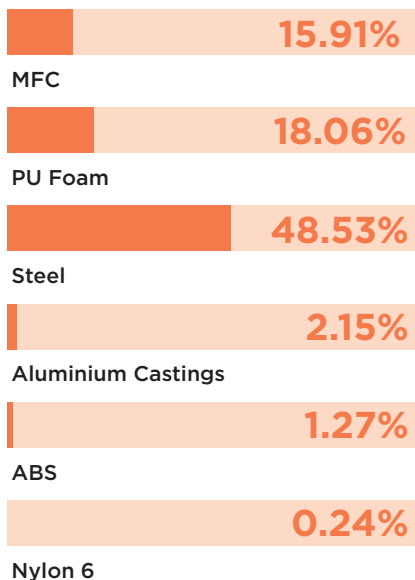
It is our duty as individuals and as a company to initially attempt to **Reduce** usage. Then we should look to **Reuse** wherever possible and finally, only after these two processes have been exhausted, should we consider **Recycling**.

Reduce Reuse Recycle

ENVIRONMENTAL

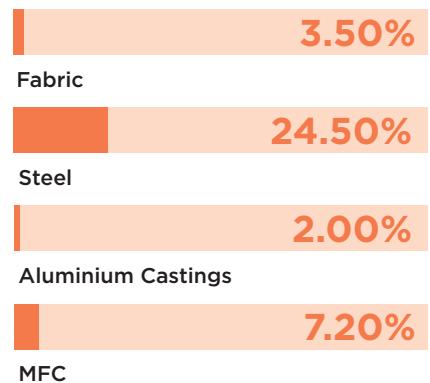
Material Content

Components are constructed of the following



Recycled Content

Contains up to 37.20% of Recycled Material



Recyclability

The range is 99% recyclable