



### CHEMISTRY PLUS HEIGHT ADJUSTABLE

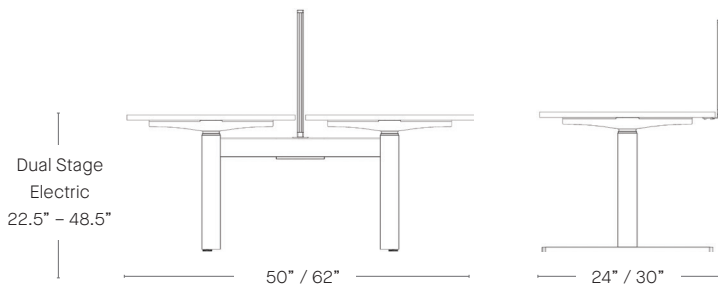
Chemistry incorporates a height adjustable workstation solution to respond to the needs of today's office, where simple elegance and inherent functionality are a must to meet a multitude of applications. Chemistry Plus Height Adjustable

desks make individual requirements possible, allowing the option to vary posture and stand while working.

Designed to fully interact with the user, whether seated or standing, height adjustable desks

permit the user to quickly set their optimum working height by means of a responsive push button electronic mechanism.

### DIMENSIONS



### DESIGN

#### Senator

Our team of talented in house designers are responsible for creating elegant, innovative furniture designs which not only look beautiful, but minimise the impact on the world around us.

They come from all over the world, but are based in our Design Centre located in a quiet Lancashire village just outside the Ribble Valley. Our dedicated facility is over three floors which include studios, a materials test centre and prototyping lab.

### STANDARD FEATURES (\*Selected models only)

- Height adjustable steel frame
- Leveling adjustment
- Scalloped cable access
- 1" TFL rectangular tops
- Electric operations
- Anti-Collision Sensor

### SPECIFIABLE FEATURES

- Standalone or back to back

### COMPLEMENTARY OPTIONS

- Universal screens
- Cable trays and risers
- Desk linking kits

### OPTIONAL ACCESSORIES

- Monitor arms
- PU Desk accessories
- Desk top accessories
- CPU holders
- Electrical accessories
- Screen accessories

### PERFORMANCE STANDARDS

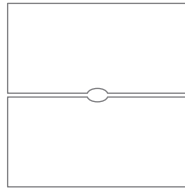
Designed to conform to and where applicable is tested to the following standards:

- BIFMA X5.5 × 2014
- SCS-EC10.3-2014 v. 3.0 Indoor Advantage Gold

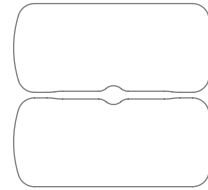
## DIMENSIONS



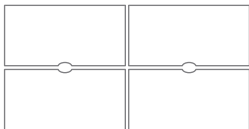
Single desk with I-leg  
Widths. 48"-78"  
Depths. 24" & 30"



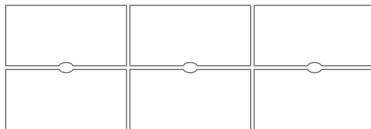
Back to back with H-leg  
Widths. 48"-78"  
Depths. 50" & 62"



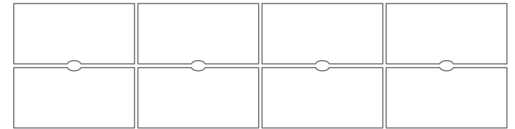
Pallet Top Back to back with H-leg  
Widths. 60"-78"  
Depths. 62"



4 Person



6 Person



8 Person

### FINISH OPTIONS

Tops are available in a range of TFL finishes from The Senator Group standard collection.

Tops come standard with matching edge banding.

### STANDARD TOP FINISHES - TFL (Edge 69)



Carini Walnut



Autumn



Strata Oak



Maple



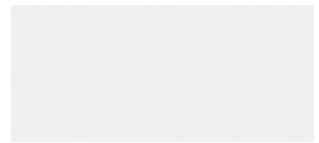
Highland Oak



Winter Oak



Hacienda White



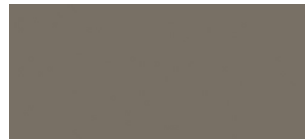
White



Light Gray



Denim

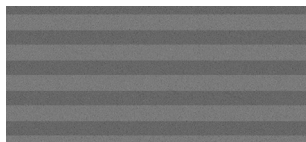


Clay

### CONTRASTING EDGE BANDS



Ply Effect Edging



Silver Ply Effect Edging

All TFLs are available with matching edge tape as standard. Contrasting edge tape can be specified.



### FRAME / LEG FINISHES



Black



White



Silver

### SCREEN FINISHES - ACRYLIC



Clear



Opaque Crystal



Opaque White



Opaque Green



Opaque Blue

### SCREEN FINISHES - GLASS



Clear



Gray Smoked

### SENATOR 3 R'S

Senator is committed to continually improving the sustainability of all environmental aspects within our business.

To meet both international standards and our own environmental targets we apply the three R's principle

#### **-Reduce, Reuse and Recycle.**

While recycling is the element which

receives the most exposure it is actually the last option available and should never be the prime target in anyone's battle to reduce waste.

It is our duty as individuals and as a company to initially attempt to **Reduce** usage. Then we should look to **Reuse** wherever possible and finally, only after these two processes have been exhausted, should we consider **Recycling**.

**REDUCE  
REUSE  
RECYCLE**